

VESTA

An **ITW** Company



2021 CATALOGUE

An **ITW** Company



Gas Fryer



F3
3-tube Gas Fryer



Dimensions: 15.5×30×45.5 inch
Power: 90,000 BTU/HR
Capacity: 40LB
Double Rob Stainless Steel Basket
Hanger
Stainless Steel Door with Door
Stabilizer
6 Inch Adjustable legs (Casters will
be an optional accessory)



F4
4-tube Gas Fryer



Dimensions: 15.5×30×45.5 inch
Power: 120,000 BTU/HR
Capacity: 50LB
Double Rob Stainless Steel Basket
Hanger
Stainless Steel Door with Door
Stabilizer
6 Inch Adjustable legs (Casters will
be an optional accessory)



F5
5-tube Gas Fryer



Dimensions: 21×34.2×45.5 inch
Power: 150,000 BTU/HR
Capacity: 70LB
Double Rob Stainless Steel Basket
Hanger
Stainless Steel Door with Door
Stabilizer
6 Inch Adjustable legs (Casters will
be an optional accessory)

COMMERCIAL FOOD SERVICE EQUIPMENT

Gas Range



S24
4-burner gas range with oven



Dimension: 24×32.5×60 inch
Power: 3/4" NPT gas connection
BTU(open burners):30,000×4
BTU(oven) : 30,000
Net Weight: 132kg
Gross Weight:162kg



S36
6-burner gas range with oven



Dimension: 36×32.5×60 inch
Power: 3/4" NPT gas connection
BTU(open burners):30,000×6
BTU(oven) : 30,000
Net Weight: 167kg
Gross Weight:207kg



S60
10-burner gas range with oven



Dimension: 60×32.5×60 inch
Power: 3/4" NPT gas connection
BTU(open burners):30,000×10
BTU(oven) : 30,000×2
Net Weight: 285kg
Gross Weight : 350kg

Gas Range



S36-G24
2 open burners with 24"griddle



Dimension: 36x32.5x60 inch
BTU(open burners):30,000×2
BTU(oven) : 30,000
Griddle:24"/40,000BTU



S60-G24
6 open burners with 24" griddle



Dimension: 60x32.5x60 inch
BTU(open burners):30,000×6
BTU(oven) : 30,000×2
Griddle:24"/40,000BTU



S60-GS24
6 open burners with 24" griddle
-broiler



Dimension: 60x32.5x60 inch
BTU(open burners):30,000×6
BTU(oven) : 30,000×2
Griddle-broiler:24"/36,000BTU

Convection Oven & Salamander



FGC100
Gas convection oven



Dimensions: 38x41x57 inch
Power: 3*18000BTU
Cavity capacity: 720*545*508=238L
Rack dimension: 523*714mm
Level distance: 415mm, total 10 levels
• Porcelain coated cavity inside and out
• High efficiency, even temperature inside cavity



FEC100
Electric convection oven



Dimension: 38 × 41 × 54 inch
Chamber Dimension: 29 × 20 × 22 inch
Rack Dimension: 21 × 28 inch
Voltage: 208-240V/60Hz 1 Ph or 3 Ph
Power: 9-11.9KW
Electronic thermostat with temperature control range of 150 °F to 550°F
60-minute, continuous-ring timer
Control area cooling fan
Interior oven lamp
Porcelain interior chamber
Three nickel plated racks, eleven rack positions with a minimum of 1-5/8" (41mm) spacing



REB-03
Gas Salamander



Dimension: 35x22x23 inch
LPG: 2800-3700Pa / 0.93Kg/h
NG: 2000-2500Pa / 1.11m³/h
Power: 11.5kW/39,238BTU
Net Weight: 74kg



REB-02
Gas Salamander



Dimension: 35x24x23 inch
LPG: 2540Pa / 0.93Kg/h
NG: 1000Pa / 1.11m³/h
Power: 10.25kW/35,000BTU
Net Weight: 72kg



REB-02-L
Gas Salamander



Dimension: 35x24x23 inch
LPG: 2540Pa / 0.93Kg/h
NG: 1000Pa / 1.11m³/h
Power: 10.25kW/35,000BTU
Net Weight: 72kg

Countertop Gas Range



C12HT
Countertop Hot Plate 12"



Dimension: 12×28×13 inch
Power: 2 x 25,000 BTU
3/4" rear gas connection



C24HT
Countertop Hot Plate 24"



Dimension: 24×28×13 inch
Power: 4 x 25,000 BTU
3/4" rear gas connection



C36HT
Countertop Hot Plate 36"



Dimension: 36×28×13 inch
Power: 6 x 25,000 BTU
3/4" rear gas connection



RB-1
Countertop Stock Pot Range



Dimension: 18×21×23 inch
Power: 80,000 BTU
3/4" rear gas connection



RB-1D
Countertop Stock Pot Range



Dimension: 18×42×23 inch
Power: 2 x 80,000 BTU
3/4" rear gas connection

Countertop Gas Charboiler



C24CB-SR
Countertop Gas Charboiler 24"



Dimension: 24×28×15 inch
Power: 2 x 35,000 BTU
U style burner
3/4" rear gas connection



C36CB-SR
Countertop Gas Charboiler 36"



Dimension: 36×28×15 inch
Power: 3 x 35,000 BTU
U style burner
3/4" rear gas connection



C48CB-SR
Countertop Gas Charboiler 48"



Dimension: 48×28×15 inch
Power: 4 x 35,000 BTU
U style burner
3/4" rear gas connection

Countertop Gas Griddle (Manual Control)



C24GG
Countertop Gas Griddle 24"
(Manual Control)



Dimension: 24×28×15 inch
Power: 2 x 30,000 BTU
U style burner
3/4" rear gas connection



C36GG
Countertop Gas Griddle 36"
(Manual Control)



Dimension: 36×28×15 inch
Power: 3 x 30,000 BTU
U style burner
3/4" rear gas connection



C48GG
Countertop Gas Griddle 48"
(Manual Control)



Dimension: 48×28×15 inch
Power: 4 x 30,000 BTU
U style burner
3/4" rear gas connection

Countertop Gas Griddle (Thermostatic Control)



C24TGG
Countertop Gas Griddle 24"
(Thermostatic Control)



Dimension: 24×28×15 inch
Power: 2 x 30,000 BTU
U style burner
Thermostatic control: 200°F to 575°F
3/4" rear gas connection



C36TGG
Countertop Gas Griddle 36"
(Thermostatic Control)



Dimension: 36×28×15 inch
Power: 3 x 30,000 BTU
U style burner
Thermostatic control: 200°F to 575°F
3/4" rear gas connection



C48TGG
Countertop Gas Griddle 48"
(Thermostatic Control)



Dimension: 48×28×15 inch
Power: 4 x 30,000 BTU
U style burner
Thermostatic control: 200°F to 575°F
3/4" rear gas connection

COMMERCIAL FOOD SERVICE EQUIPMENT

Countertop Electric Fryer



EF-6L
Electric 1-Tank Fryer(1-Basket)



Dimension: 12×16×11 inch
Capacity: 6 L
Power(CE): 2.5 kW
Voltage(CE): 220-240V
Power(ETL&NSF): 1.75KW
Volts(ETL&NSF): 120V/60Hz
Net Weight: 5.5kg



EF-6L-2
Electric 2-Tank Fryer(2-Basket)



Dimension: 22×16×11 inch
Power(CE): 2.5KW+2.5KW
Voltage(CE): 220-240V
Power(ETL&NSF): 1.75KW+1.75KW
Volts(ETL&NSF): 120V/60Hz
Net Weight: 12kg



EF-12L
Electric 1-Tank Fryer
(1-Basket, Counter Top)



Dimension: 11.4×22×16 inch
Capacity: 8 L
Power(CE): 3.25kw
Voltage(CE): 220-240V
Power(ETL&NSF): 2.7-3.6KW
Volts(ETL&NSF): 208-240V/50/60Hz
Net Weight: 7Kg



EF-12L-2
Electric 2-Tank Fryer
(2-Basket, Counter-top)



Dimension: 23×18.5×16 inch
Capacity: 8+8 L
Power(CE): 3.25+3.25kW
Voltage(CE): 220-240V
Power(ETL&NSF):
(2.7-3.6)+(2.7-3.6)KW
Volts(ETL&NSF): 208-240V/50/60Hz
Net Weight: 17.5kg

Electric contact grill/Griddle



GH-811
Electric contact grill



Dimensions: 11.4×12×8 inch
 Power(CE): 1.8KW
 Volts(CE): 220-240V/50Hz
 Power(ETL&NSF): 1.75KW
 Volts(ETL&NSF): 120V/50/60Hz
 Temperature: 300°C
 Upper grill size: 214×214mm
 Lower grill size: 218×230mm
 Heating Elements: 2
 Weight: 14kg
 This model is available in different types of plate.
 A is both grooved on top and bottom.
 B is both flat on top and bottom
 C is top grooved and bottom flat



GH-811E
Electric contact grill



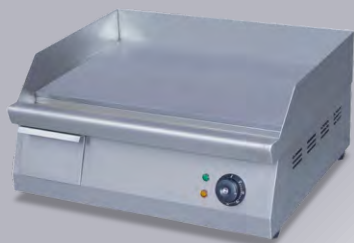
Dimensions: 16×12×8 inch
 Power(CE): 2.2KW
 Volts(CE): 220-240V/50Hz-60Hz
 Power(ETL&NSF): 1.75KW
 Volts(ETL&NSF): 120V/50/60Hz
 Temperature: 300°C
 Upper grill size: 338×220mm
 Lower grill size: 338×230mm
 Heating Elements: 2
 Weight: 14kg
 This model is available in different types of plate.
 A is both grooved on top and bottom.
 B is both flat on top and bottom
 C is top grooved and bottom flat



GH-813
Electric contact grill



Dimensions: 22.4×12×8 inch
 Power(CE): 1.8KW+1.8KW
 Volts(CE): 220-240V/50Hz
 Power(ETL&NSF): 1.75+1.75KW
 Volts(ETL&NSF): 120V/50/60Hz
 Temperature: 300°C
 Upper grill size: 2x214×214mm
 Lower grill size: 475×230mm
 Heating Elements: 4
 Weight: 29kg
 This model is available in different types of plate.
 A is both grooved on top and bottom.
 B is both flat on top and bottom
 C is top grooved and bottom flat



GH-400
Electric griddle



Dimensions: 16×21×11 inch
 Power: 3KW
 Volts: 230V



GH-610
Electric griddle



Dimensions: 24×21×11 inch
 Power: 6KW
 Volts: AC230V
 Weight: 40kg

COMMERCIAL FOOD SERVICE EQUIPMENT

Electric Bain Marie



KG-165
Electric Bain Marie



Dimension: 14×22×10 inch
Power: 1.2kW
Voltage: AC220-240V, AC120V/50-60Hz
Temperature: 100°C
Heating Elements: 1
Net Weight: 9kg



KG-165F
Electric Bain Marie



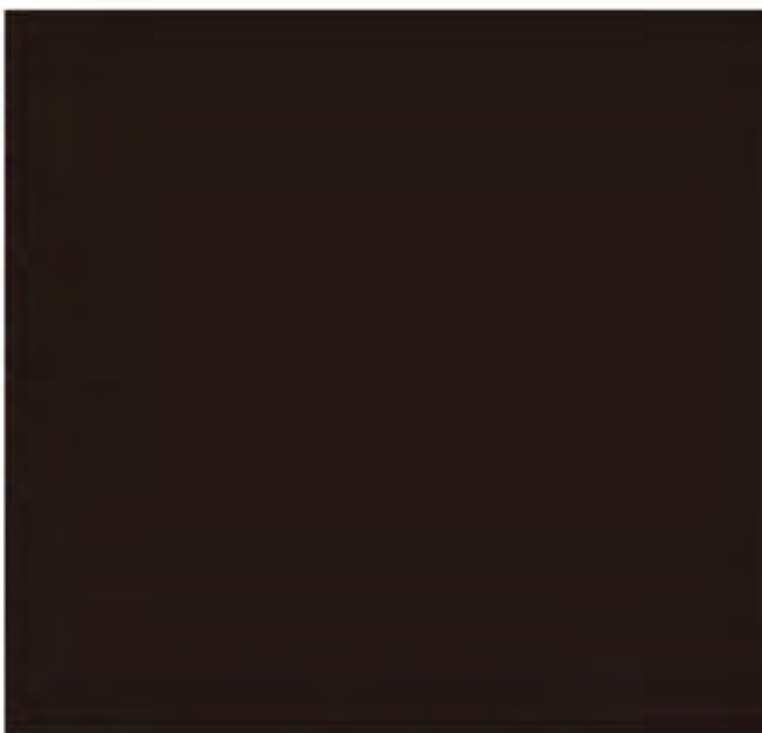
Dimension: 15×22×9 inch
Power: 1.2kW
Voltage: 220-240V
Net Weight: 10.5kg



KG-205
Electric Bain Marie



Dimension: 15×22×11.6 inch
Power: 1.2kW
Voltage: AC220-240V, AC120V/50-60Hz
Temperature: 100°C
Heating Elements: 1
Net Weight: 12kg



The pictures of products contained in Catalogue are just for references.
We reserve the right to make any modifications for product improvements.

VESTA
An **ITW** Company

Vesta (Guangzhou) Catering Equipment Co., Ltd.

No. 43 Lianglong South Street, Huashan Town, Huadu District, Guangzhou,
Guangdong Province, 510880, P.R.China
Tel: (86)20-86948033 62323017 Fax: (86)20-86848623
Website: <http://www.vesta-china.com>
E-mail: vesta.sales@vesta-china.com